

BENTLEY RESIDENCES

18401 Collins Ave.
 Sunny Isles Beach , Fl. 33160



cover



DEVELOPER 18401 Developers, LLC.
 18001 Collins Avenue, 31st Floor
 Sunny Isles Beach, FL 33160
 305-936-9191

ARCHITECTS Sieger Suarez Architects, LLC.
 14121 S.W. 119 Avenue
 Miami, Florida 33186
 305-274-2702

STRUCTURAL ENGINEERS CHM Structural Engineers, LLC.
 7990 S.W. 117 Avenue
 Miami, Florida 33183
 305-667-1621

MECHANICAL ENGINEERS MG Engineering - FI, Corp.
 300 South Park Road, Suite 140
 Hollywood, Florida 33021
 305-755-3833
 mgdpc.net

LANDSCAPE ARCHITECT EGS2 Corp.
 14121 S.W. 119 Avenue
 Miami, Florida 33186
 305-274-2702

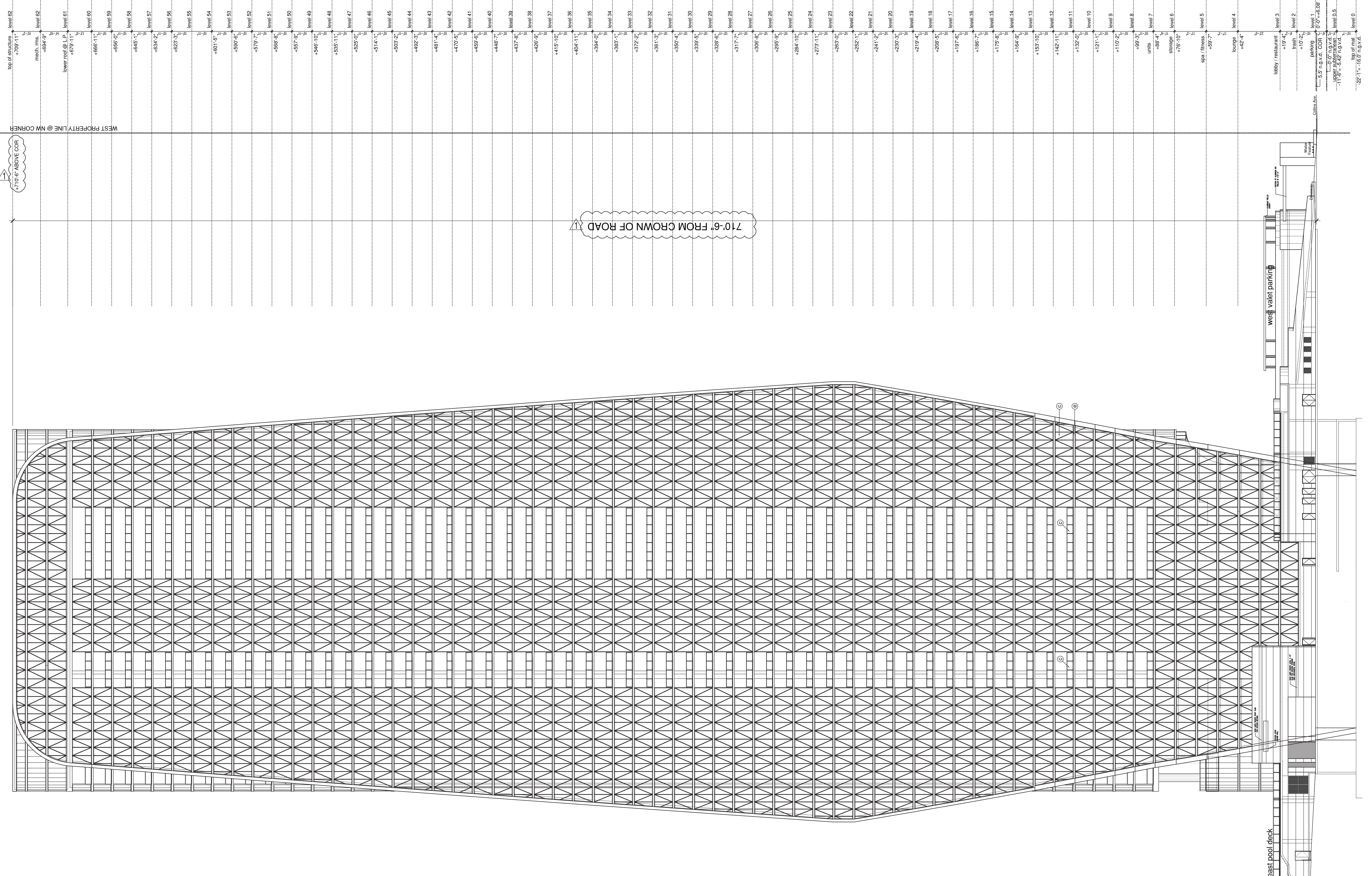
CIVIL LANGAN
 Parkside Corporate Center
 15150 NW 79th Court, Suite 200, Miami, Florida 33016
 786-264-7200



This item has been digitally signed and sealed by Jose Julio Suarez, Registered Architect on 08-14-2023 using a Digital Signature. Printed copies of this document are not considered signed and sealed until the DSA authentication code must be verified on any electronic copies.

08/14/2023

Seal
 In my professional judgment and to the best of my knowledge and belief, these plans and specifications comply with the applicable building codes and fire safety codes, as mandated by which, for the jurisdiction in which the structure contained in these documents shall be constructed.
 Revision
 Revision
 Revision
 Revision
 Site Plan Amendment
 07-31-2023
 SS Number
 A1703
 Sheet Number



WEST PROPERTY LINE @ NW CORNER

710'-6" FROM CROWN OF ROAD

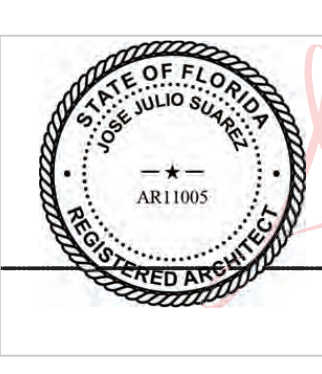
north elevation

SETBACK (LINE OF BULKHEAD)

north elevation

- material legend**
- (a) dark tinted black glass
 - (b) black frame
 - (c) silver reflective glass
 - (d) black aluminum
 - (e) gray painted stucco

scale: 1"=20'

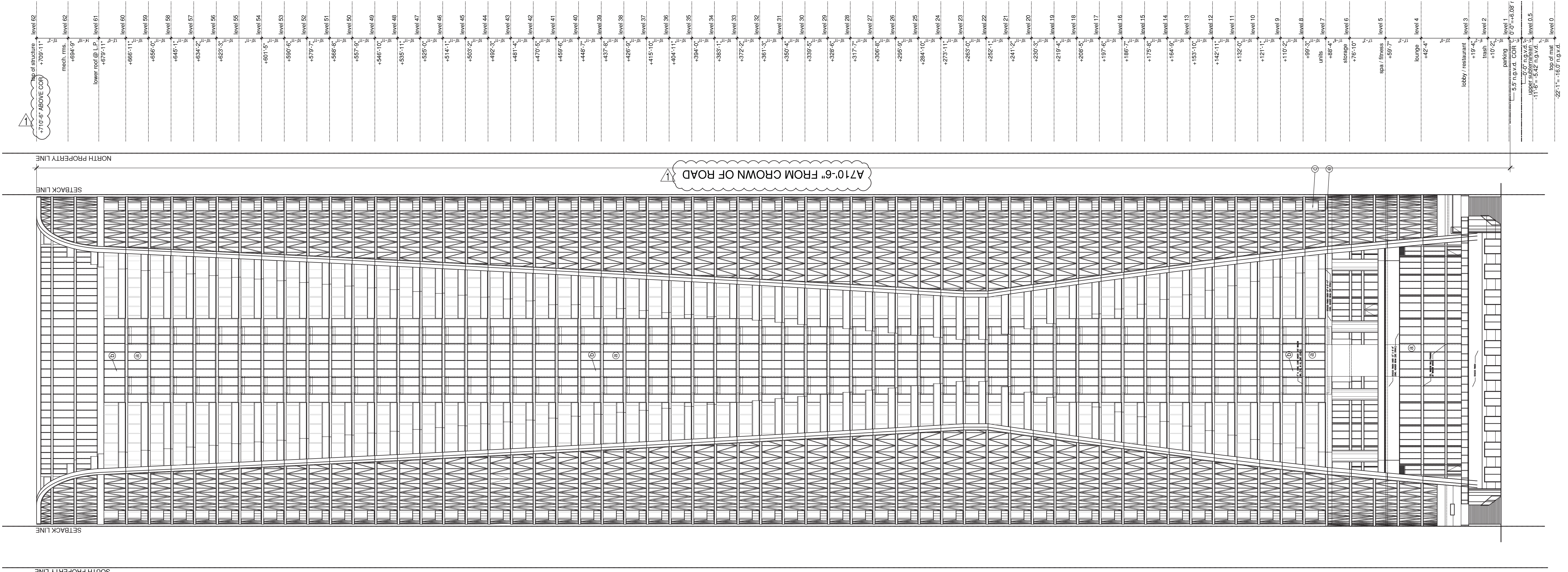


Digitally signed by Jose J. Suarez
DN: cn=Jose J. Suarez, o=Sieger Suarez Architects LLC, email=jose@ssarchitects.com, c=US
Date: 2023.08.25 11:09:28 -0400

This item has been digitally signed and sealed by Jose J. Suarez, Registered Architect #08-14-2023
Printed copies of this document are not considered valid. The digital signature and seal must be verified on any electronic copies.

In my professional judgment and to the best of my knowledge and belief, these plans and specifications comply with the applicable building codes and Florida codes, as specified by contract. For the jurisdiction in which the structure contained in these documents shall be constructed.

Revision	Date
08-25-2023	08-25-2023
07-31-2023	07-31-2023
A1703	A1703
Sheet Number	Sheet Number



level 62	Top of structure	+709'-11"
level 62	mech. rms.	+694'-9"
level 61	lower roof @ L.P.	+679'-11"
level 60		+666'-11"
level 59		+656'-4"
level 58		+646'-7"
level 57		+634'-2"
level 56		+623'-3"
level 55		+601'-5"
level 54		+590'-7"
level 53		+579'-7"
level 52		+568'-6"
level 51		+557'-5"
level 50		+546'-10"
level 49		+535'-11"
level 48		+525'-4"
level 47		+514'-7"
level 46		+503'-2"
level 45		+492'-3"
level 44		+481'-4"
level 43		+470'-5"
level 42		+459'-6"
level 41		+448'-7"
level 40		+437'-7"
level 39		+426'-6"
level 38		+415'-10"
level 37		+404'-11"
level 36		+394'-4"
level 35		+383'-7"
level 34		+372'-2"
level 33		+361'-3"
level 32		+350'-4"
level 31		+339'-5"
level 30		+328'-6"
level 29		+317'-7"
level 28		+306'-6"
level 27		+295'-6"
level 26		+284'-10"
level 25		+273'-11"
level 24		+263'-4"
level 23		+252'-2"
level 22		+241'-3"
level 21		+230'-4"
level 20		+219'-4"
level 19		+208'-5"
level 18		+197'-6"
level 17		+186'-7"
level 16		+175'-8"
level 15		+164'-9"
level 14		+153'-10"
level 13		+142'-11"
level 12		+132'-4"
level 11		+121'-5"
level 10		+110'-2"
level 9		+99'-2"
level 8	units	+88'-4"
level 7	skycorridor	+76'-10"
level 6	spa / fitness	+59'-7"
level 5	lobby / restaurant	+19'-4"
level 4	lounge	+10'-2"
level 3	lounge	+10'-2"
level 2	lounge	+10'-2"
level 1	parking	+10'-2"
level 0	5.5' higher CON. upper substructure	0'-0" = +0'-0"
level 0.5	upper substructure	-11'-6" = -542' n.g.v.d.
level 0	top of pad	-22'-1" = -163' n.g.v.d.

- material legend**
- (a) dark tinted black glass
 - (b) black frame
 - (c) silver reflective glass
 - (d) black aluminum
 - (e) gray painted stucco

east elevation

scale: 1"=20'



Digitally signed by Jose J. Suarez
DN: cn=US, o=Sieger Suarez Architects LLC, dnQualifier=A01410C00, 00017A34D4A2B300004, 410, cn=Jose J. Suarez, Date: 2023.08.25 11:10:45 -0400'

This item has been digitally signed and sealed by Jose J. Suarez, Registered Architect on 08-14-2023 using a Digital Signature. Printed copies of this document are not considered signed and sealed and the SIA authentication code must be verified on any electronic copies.

In my professional judgment and to the best of my knowledge and belief, these plans and specifications comply with the applicable building codes and Fire Safety codes, as specified by, and which the jurisdiction in which the structure contained in these documents shall be constructed.

Revision _____
Revision _____
Revision _____
Revision _____
Revision _____

08-25-2023
07-31-2023
A1703
Sheet Number

